

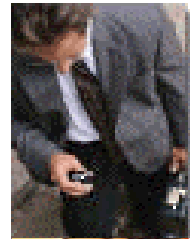
LynxPro

Fire – Lynx Nite-Alarm System

Designed to wake and alert people with impaired hearing to the activation of the **fire** alarm.



- . Self contained bedside unit
- . Vibrating pillow pad
- . Flashing light
- . Use in any room



www.lynxpro.co.uk
info@lynxpro.co.uk
Tele: 0871 717 9033
Fax: 0871 717 9034

LynxPro



Fire – Lynx Nite-Alarm System

The LynxPro **Fire – Lynx** Nite Alarm system has been specifically designed to wake and alert the deaf and those who are hard of hearing to the activation of the fire alarm once they have retired to bed.

A hearing aid user will of course remove their hearing aid when they go to bed. In many cases this will render that person 'deaf' to the sound of the fire alarm.

The LynxPro Nite-Alarm bedside unit:

- Plugs into the mains power supply **in any room.**
- **No** hard wiring required
- UPS battery back in case of power failure
- Wirelessly linked to the radio transmitter
- Pillow pad vibrates when active
- Flashing light when active
- Off switch for storage.

The **Nite-Alarm** is activated by the LynxPro **Fire – Lynx** transmitter unit.



Fire - Lynx transmitter

The Fire – Lynx system fully complies with the Wireless Telegraphy Act and follows the recommendations of the BS 5839 Part 1; 2002



For further details contact us at:



A transmitting licence is required for this transmitter. Full application details are included or as an option LynxPro will make the application on your behalf.

www.lynxpro.co.uk
info@lynxpro.co.uk
Tele: 0871 717 9033
Fax: 0871 717 9034